

Revolutionizing Development: **Agmo's DevOps Journey- from Zero to Hero**



ICT Strategic Management



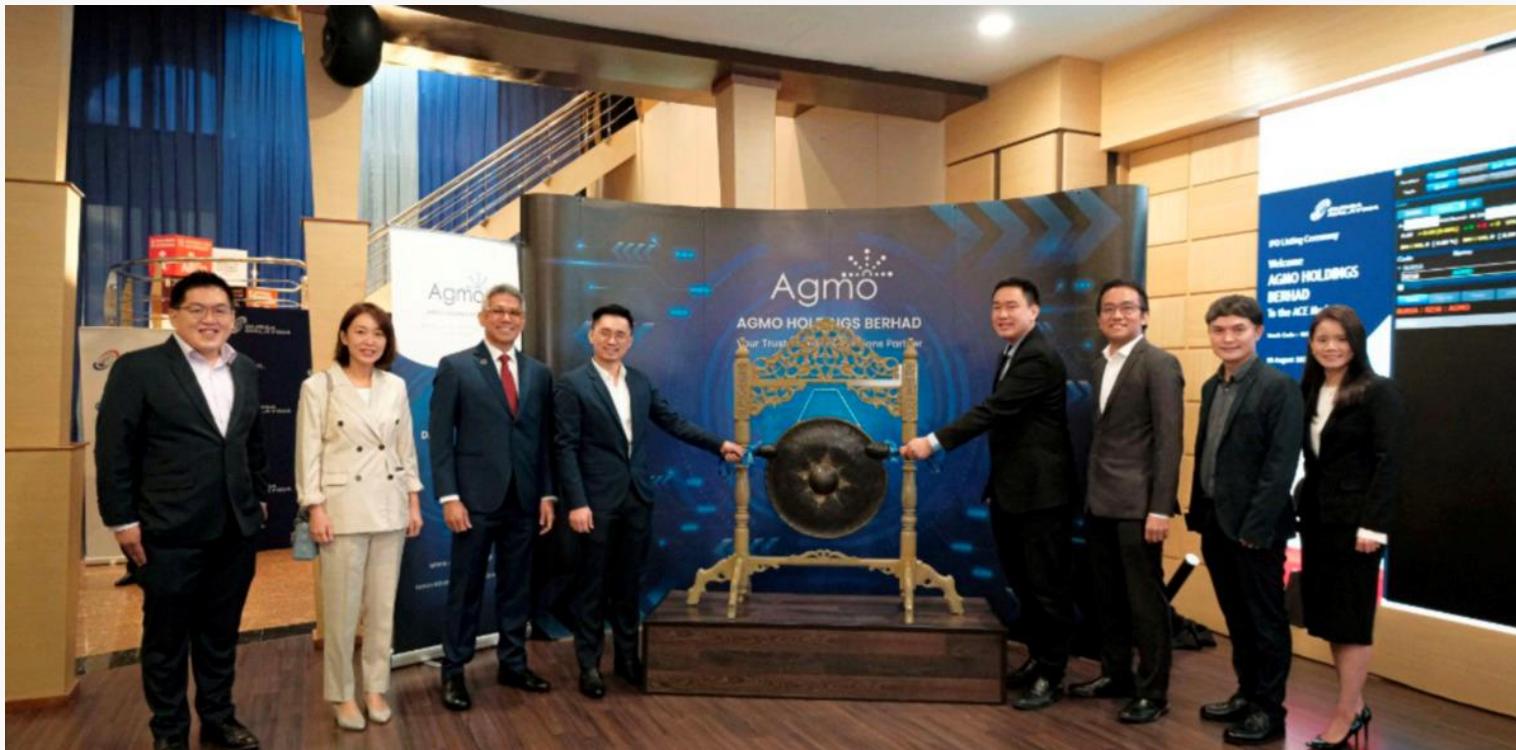
The Digital Influencer:

Ts. Tan Aik Keong (AK)

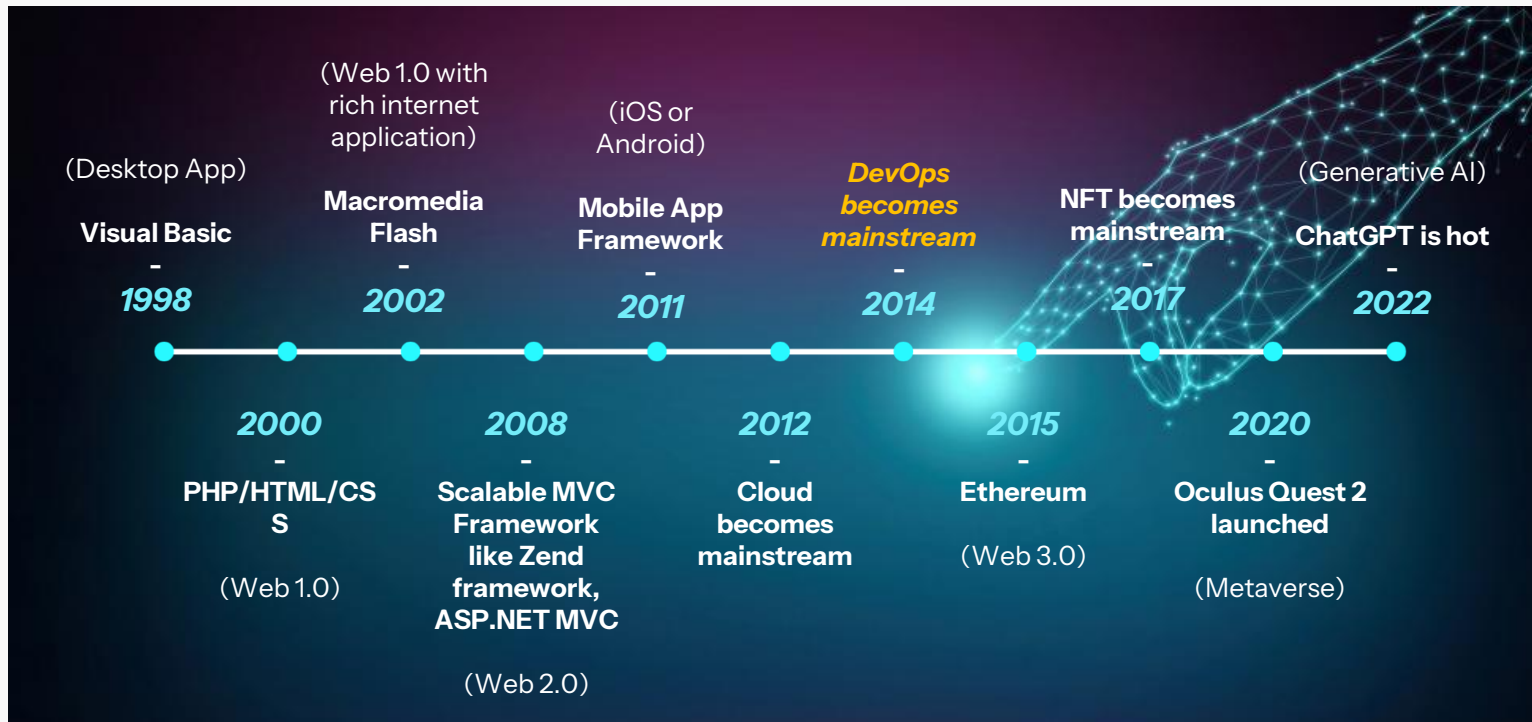
Founder & Chief Executive Officer of Agmo Group



From Software Developer to IPO (2022)



My technology journey (1998 to now)



My first application (2002)



Introduction to DevOps

*A transformative approach to
Software Development & IT Operations*

The old day Development

The old day..

- 20020103_AK_v1_CopiedFromJH.zip
- 20020103_AK_v1.2_Add_HelpButton.zip
- 20020104_AK_v1.3_FixBugCantLogout.zip
- 20020104_AK_v1.3_FixBugOnLoginFunction.zip
- 20020105_AK_v1.4_RefineHomescreen.zip
- 20020105_AK_v1.4_RefineHomescreen2_MergeWithJH.zip
- 20020105_AK_v1.4_RefineHomescreen3_MergeWithCS.zip
- 20020106_AK_v1.5_DontDelete!!!_Baseline1.zip
- 20020106_AK_v1.6_StagingRelease.zip
- 20020106_AK_v1.6_StagingReleaseBugFixingRound1.zip
- 20020106_AK_v1.6_StagingRel...FixingRound2_MergeWithJH.zip
- 20020106_AK_v1.6_StagingReleaseBugFixingRound3.zip
- 20020106_AK_v1.7_StagingReleaseBugFixingFinalRound.2zip
- 20020106_AK_v1.7_StagingReleaseBugFixingFinalRound.zip
- 20020106_AK_v1.7_StagingReleaseBugFixingFinalRound3.zip
- 20020106_AK_v1.7_StagingReleaseBugFixingFinalRound4.zip
- 20020106_AK_v1.7_StagingRel...gFinalRound5_MergeWithCS.zip
- 20020106_AK_v1.7_StagingReleaseBugFixingFinalRound6.zip
- 20020107_AK_v1.8_StagingRel...ugFixingFinalFinalfinalRound.zip

The Challenges

Local Copy

Once accidentally deleted, it is gone

No Version Log

Purely based on the file names

Difficult in Collaboration

Manually merging by eyeballing



2000











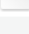
2005



2008

The old day Operations

*The old day..
FTP uploads to
servers*

-  20020108_AK_v1_FirstDeployment.zip
-  20020108_AK_v1.2_UpdateGoogleToProductionKey.zip
-  20020108_AK_v1.3_AddUserAddressColumn.zip
-  20020109_AK_v1.4_DontDelete!!ThisIsProduction.zip
-  20020109_AK_v1.4_DontDelete!!ThisIsProduction2.zip
-  20020109_AK_v1.4_DontDelete!!ThisIsProduction3.zip
-  20020109_AK_v1.4_DontDelete!!ThisIsProductionDB1.zip
-  20020109_AK_v1.4_DontDelete!!ThisIsProductionDB2.zip
-  20020109_AK_v1.4_DontDelete!!ThisIsProductionDB3.zip

The Challenges

Local Copy

Once accidentally deleted, it is gone

No Version Log

Purely based on the file names

Difficult in Collaboration

Manually merging by eyeballing & could get accidentally source code replacement by other members

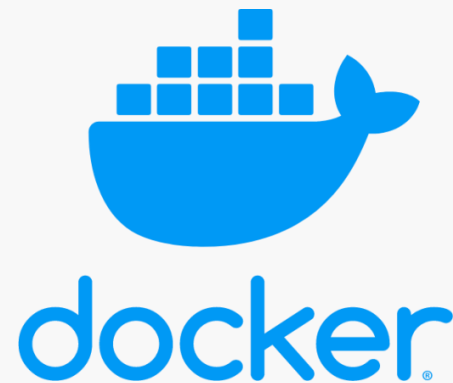


2004



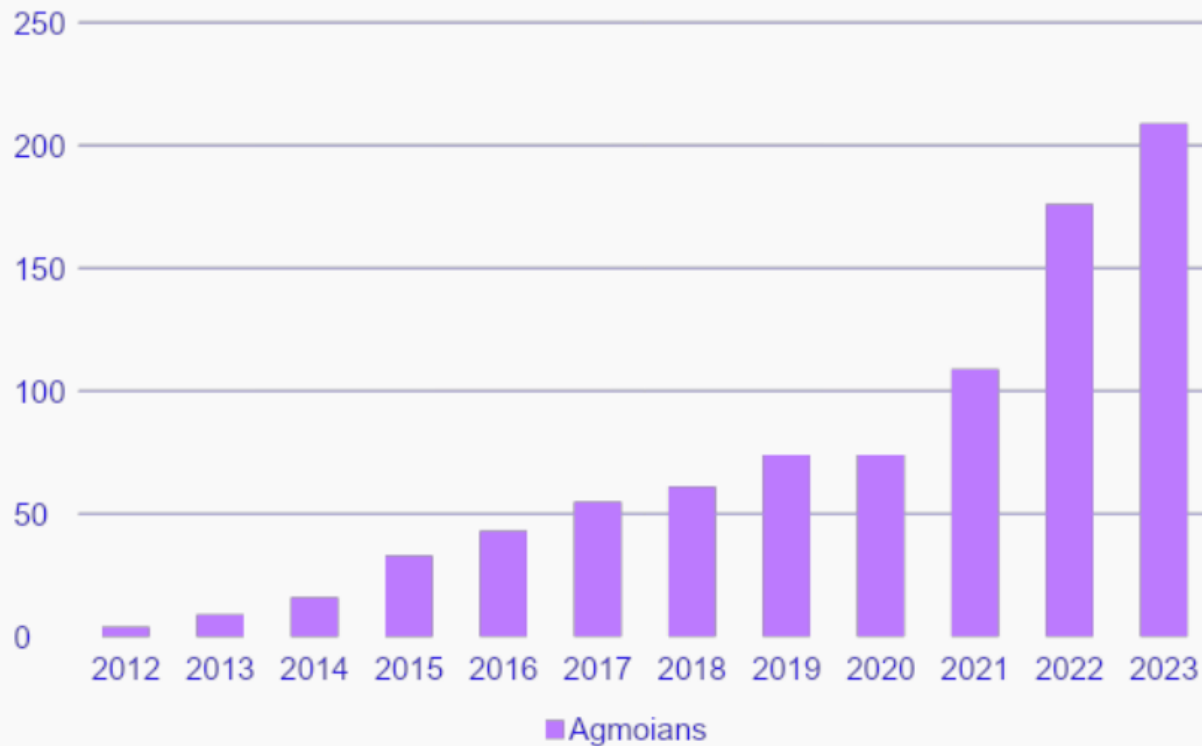
Jenkins

2012

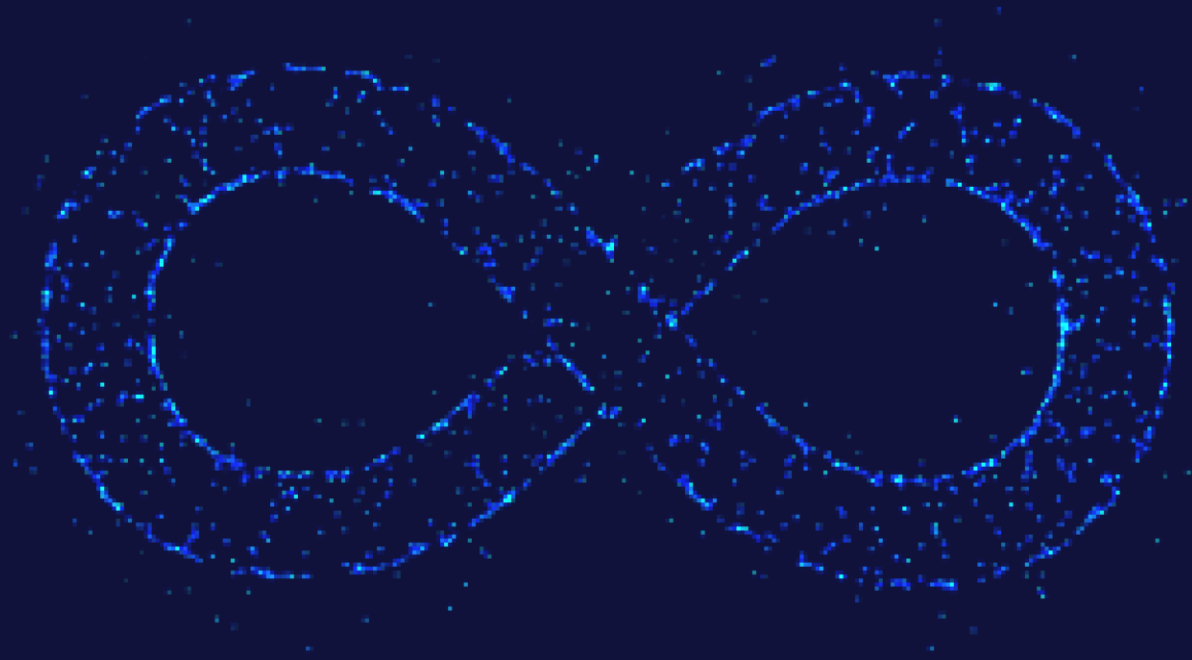


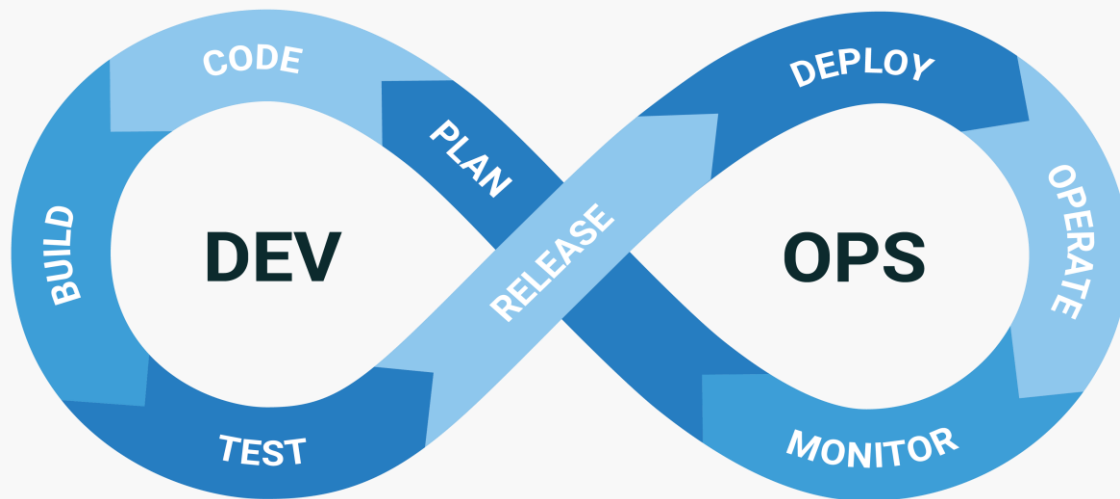
2013

Agmo Group



What is DevOps?





A set of ***Practices, Principles & Cultural Philosophies***

Aim to **IMPROVE** collaboration & communication between
Software Development (Dev) and **IT Operations** (Ops) teams



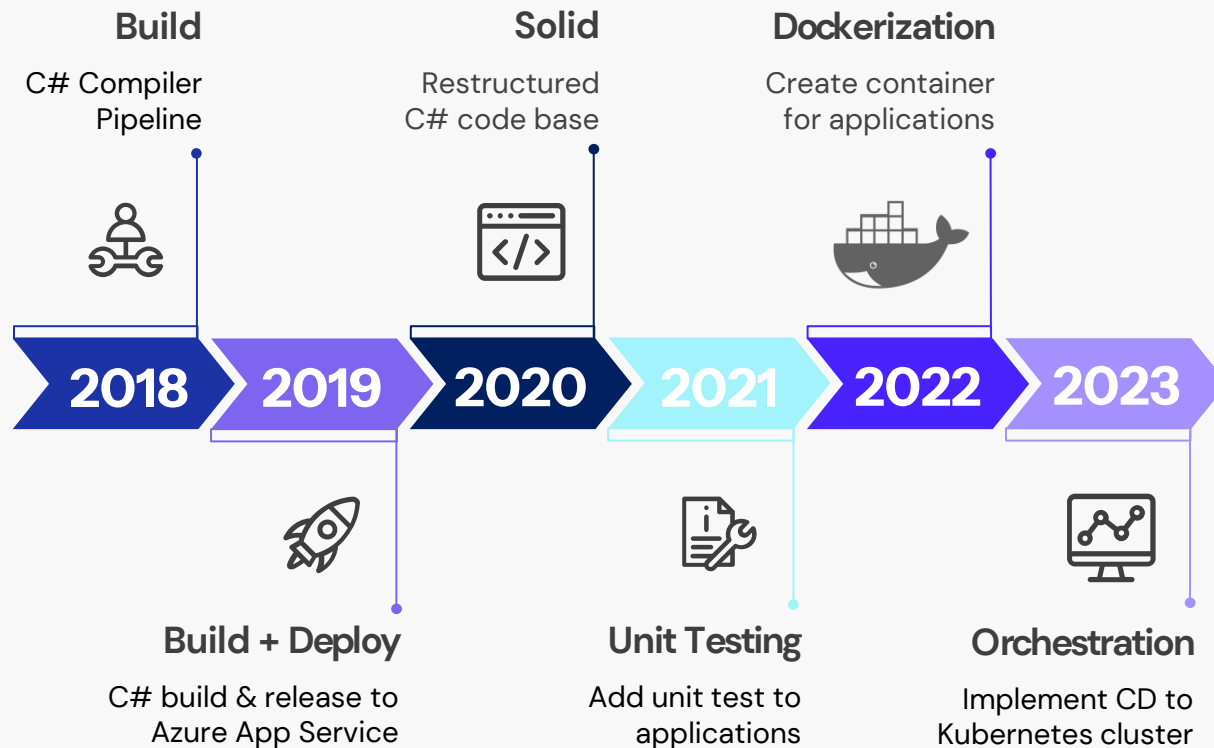
- The software development & deployment process
- Enabling organizations to deliver high-quality software

= MORE QUICKLY & EFFICIENTLY

Agmo's DevOps Journey

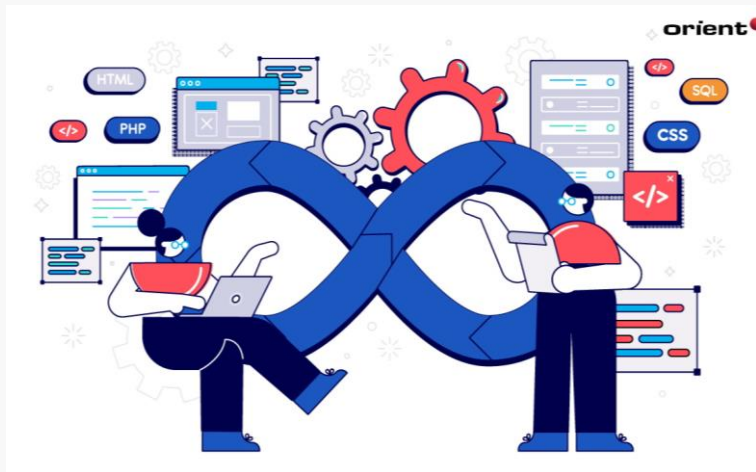
*Agmo's DevOps Timeline from
2018 to 2023*

DevOps Timeline



2018

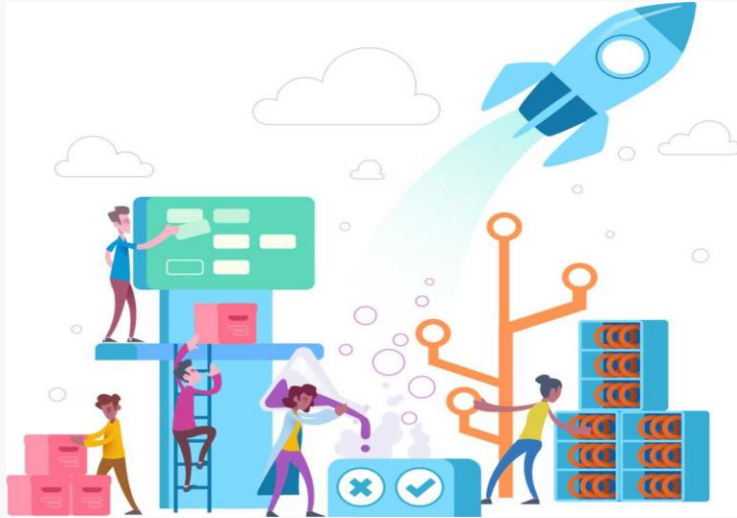
Build



- We started small at year 2018
- Initial challenge where developer-written code was occasionally non-compilable
- Create a pipeline dedicated to code compilation during the pull request phase
- This pipeline became a cornerstone practice, ensuring that only buildable code was allowed into the development branch

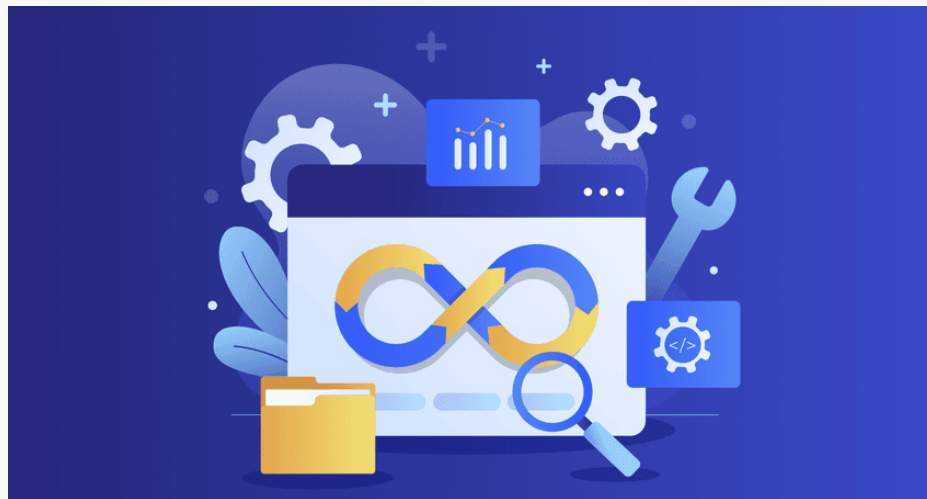
2019

Build + Deploy



- Continued to expand and refine our DevOps journey
- The backend team grow, deployment became complicated
- As team members would need to work on different branches in our repository, it is prone to mistake such as deploying from wrong working branch
- Added continuous deployment to our dev, staging server

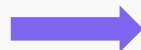
Manual Deployment **vs** DevOps



Manual Deployment Average:

Time Spend for

*Manual
Deployment*



30 minutes

Deployment

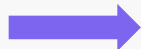
Every Week



3 deployments

Deployment

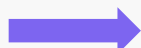
Every Month



~ 12 deployments

Deployment

Every Year



~ 144 deployments

Manual Deployment

Time Spend (Manual) in a year

= 30 minutes * 144 * 2 Environment
(*Dev, Staging*)

➔ **8,640 minutes**

DevOps Saving:

DevOps
Development
Spent



**2,400 minutes
(300 hours)**

Manual
Deployment for
Production



**30 minutes *
~72 deployments**

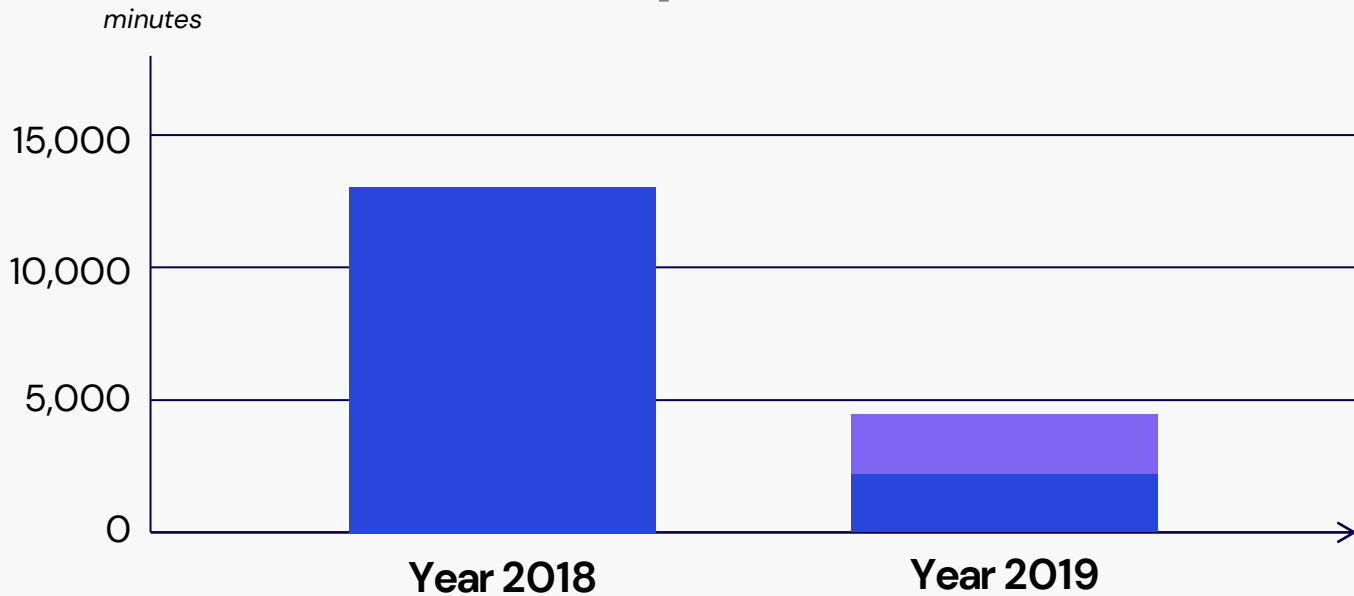
= 2,160 minutes

DevOps Savings

- 8,640 minutes (Manual Deployment)
- 2,400 minutes (DevOps Development Spent)
- 2,160 minutes (Manual Deployment for Production)

Saving → 4,080 minutes

Manual Deployment Effort & DevOps Effort



■ *DevOps Effort*
■ *Manual Deployment Effort*

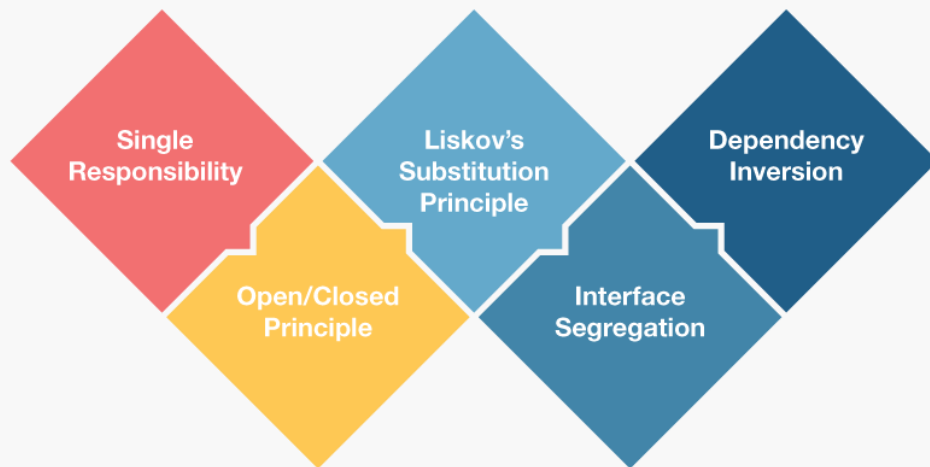
2020

Code Restructuring



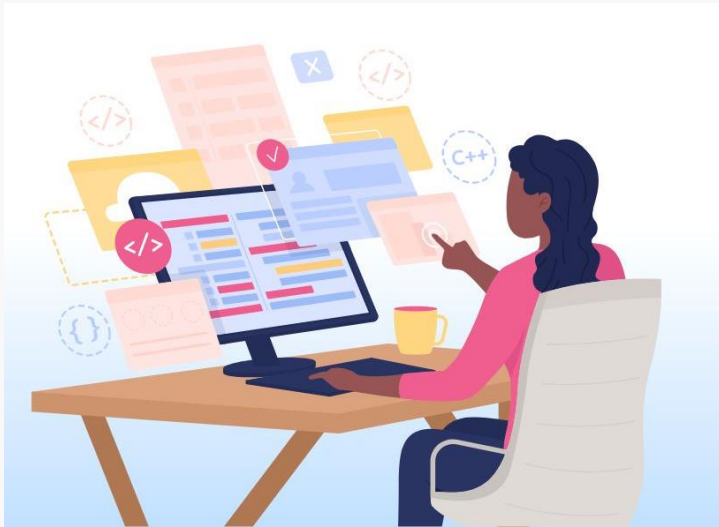
- Our backend code base continue to expand
- Become complex & hard to maintain
- Need to elevate the quality & maintainability of our codebase
- Restructuring our codebase to adhere to solid programming principles

S.O.L.I.D.



2021

Unit Testing



- Introduced unit testing as a standard practice
- Unit testing became a non-negotiable part of our development process, fostering a culture of quality & reliability in our codebase
- Automated test execution
- Tracking Code Coverage Metrics
- Reduced regression issue

Go

↻

Recent test runs

Test runs

175: VSTest_TestResults_24...

Recent exploratory sessions

Run 175 - VSTest_TestResults_2450

[Run summary](#)
[Test results](#)
[Filter](#)

↻
✎ Update comment

Summary

✔ Completed 3 weeks ago, Ran for 06 seconds

Run type	Automated
Owner	Agmo Build Service (agmo)
Tested build	<u>20230905.16</u>
Release	not available
Release Stage	not available
Build platform	not available
Build flavor	not available
Test settings	Default
MTM lab environment	not available

Comments

No comments

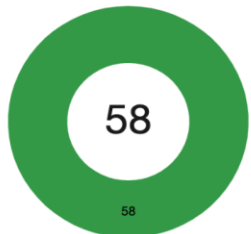
Error message

No error message

Attachments (1)

Name ↑	Size	Created Date	Comments
Tests.trx	79K	05/09/2023	


Outcome



58

■ Passed

Outcome by priority



Not available

0 20 40 60 80

■ Passed

2022

Dockerization




- Package & deploy applications
- Create consistent development environments
- Highly portable & scalable
- Integrated seamlessly into our DevOps pipeline

2023

Orchestration



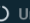


- Kubernetes (K8s)
- Scaling & Load Balancing
- High Availability (HA)
- Infrastructure as Code (IaC)
- Continuous Deployment
- Future Growth


argo
v2.8.4+c279299



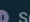

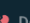

Applications
Settings
User Info
Documentation

☐ ★ Favorites Only

SYNC STATUS

- ☐  Unknown 0
- ☐  Synced 0
- ☐  OutOfSync 3

HEALTH STATUS

- ☐  Unknown 0
- ☐  Progressing 0
- ☐  Suspended 0
- ☐  Healthy 1
- ☐  Degraded 0
- ☐  Missing 2

LABELS

LABELS

Applications

+ NEW APP

SYNC APPS

REFRESH APPS



Q Search applications...



Log out

Sort: name ▼ Items per page: 10 ▼


attachment-service




Project: default
Labels: app.kubernetes.io/instance=backend
Status:  Missing  OutOfSync
Repository: https://dev.azure.com/agmo/Agmo-Projects/_git/...
Target Revis... jiahui
Path: Attachment-API/charts
Destination: in-cluster
Namespace: agmo
Created At: 09/27/2023 15:07:02 (2 minutes ago)

SYNC

REFRESH

DELETE


backend




Project: default
Labels:
Status:  Healthy  OutOfSync
Repository: https://dev.azure.com/agmo/Agmo-Projects/_git/...
Target Revis... jiahui
Path: Backend-API/argo-apps
Destination: in-cluster
Namespace: agmo
Created At: 09/27/2023 15:06:26 (3 minutes ago)
Last Sync: 09/27/2023 15:08:57 (a few seconds ago)

SYNC

REFRESH

DELETE



user-service


Project: default
Labels: app.kubernetes.io/instance=backend
Status:  Missing  OutOfSync
Repository: https://dev.azure.com/agmo/Agmo-Projects/_git/...
Target Revis... jiahui
Path: User-API/charts
Destination: in-cluster
Namespace: agmo
Created At: 09/27/2023 15:07:02 (2 minutes ago)

SYNC

REFRESH

DELETE


v2.8.4+c279299

Applications
Settings
User Info
Documentation

NAME

KINDS

SYNC STATUS

☐ Synced 2
☐ OutOfSync 0

HEALTH STATUS

☐ Healthy 0
☐ Progressing 3
☐ Degraded 1
☐ Suspended 0
☐ Missing 0
☐ Unknown 0

Applications / attachment-service

APP DETAILS
APP DIFF
SYNC
SYNC STATUS
HISTORY AND ROLLBACK
DELETE
REFRESH

Log out

APP HEALTH
Progressing

SYNC STATUS
Synced to jiahui (22bd2d8)

Auto sync is not enabled.
Author: aslm046 <jiahui@agmo.group> -
Comment: lower case

LAST SYNC
Sync OK to 22bd2d8

Succeeded a few seconds ago (Wed Sep 27 2023 15:09:30 GMT+0800)
Author: aslm046 <jiahui@agmo.group> -
Comment: lower case

attachment-service
3 minutes

attachment-service-configmap
a few seconds

attachment-service-deploye...
a few seconds rev.1

attachment-service-deploye...
a few seconds rev.1

attachment-service-deploye...
a few seconds errimagepull 0/1

attachment-service-deploye...
a few seconds imagepullbackoff 0/1



Welcome to the Future
The Future is now.

Latest Industry Trend



01



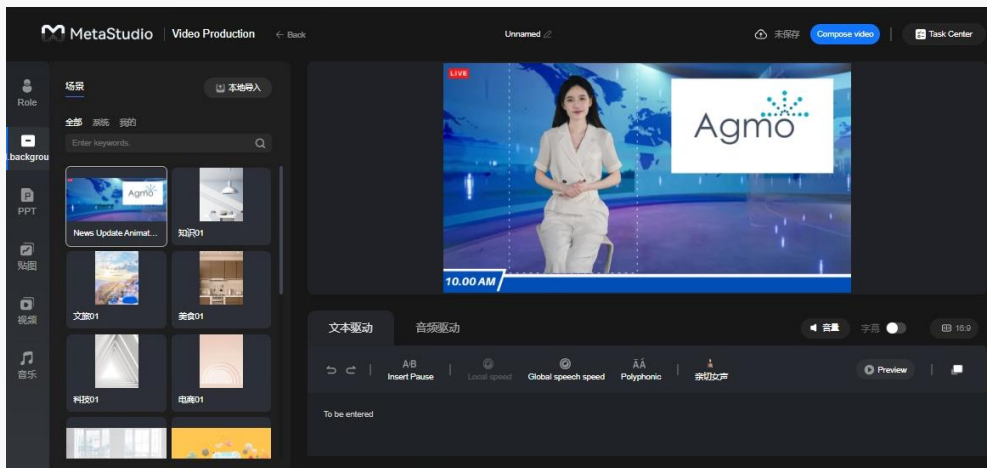
HUAWEI CLOUD

*Helping various industries achieve
seamless integration between the virtual
world & the real world*

Huawei Cloud MetaStudio Introduction

MetaStudio

Rely on two major media engines, Graphic Engine & Spatial Engine



This help partners & developers quickly build high-quality models for use in **virtual live broadcasts**, **virtual video content production**, and various scenarios such as **educational courseware**, **e-commerce promotion** and **social entertainment**.

5 Core Platform Capabilities



Example:



Selamat datang, welcome to *Forum Pemodenan & Pendigitalan Sektor Awan*

02

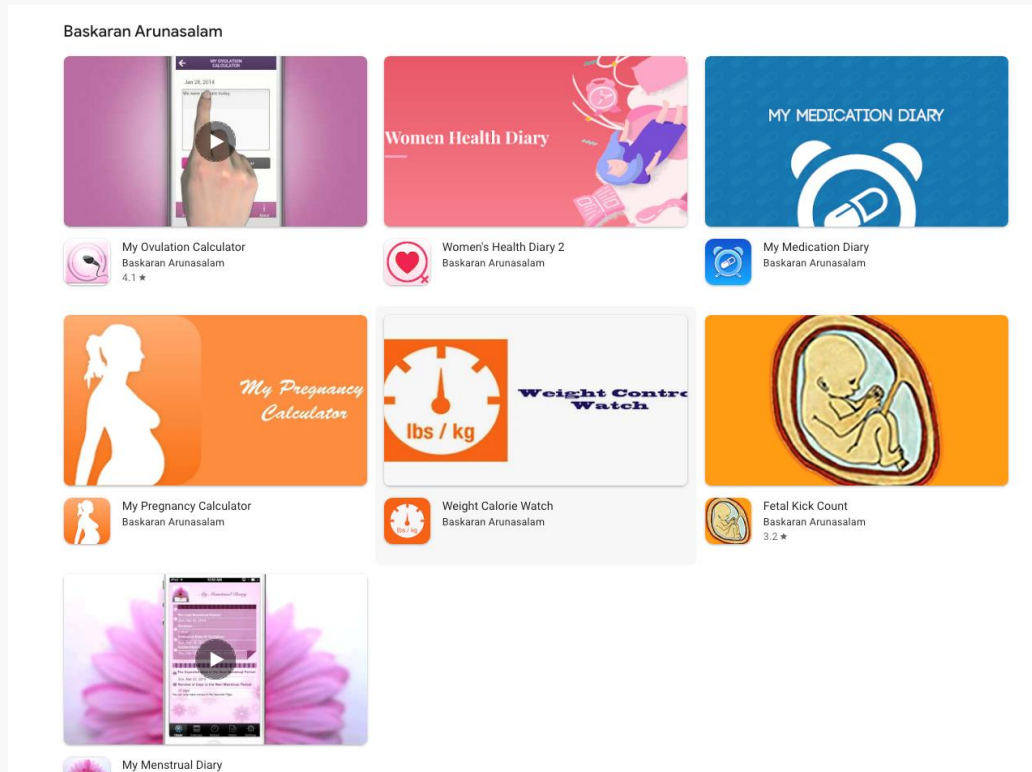
 **Alibaba Cloud**

Alibaba Cloud EMAS SuperApp Introduction

The old day,

Users have to download multiple individuals apps to access:

1. *Various services*
2. *Functionalities*

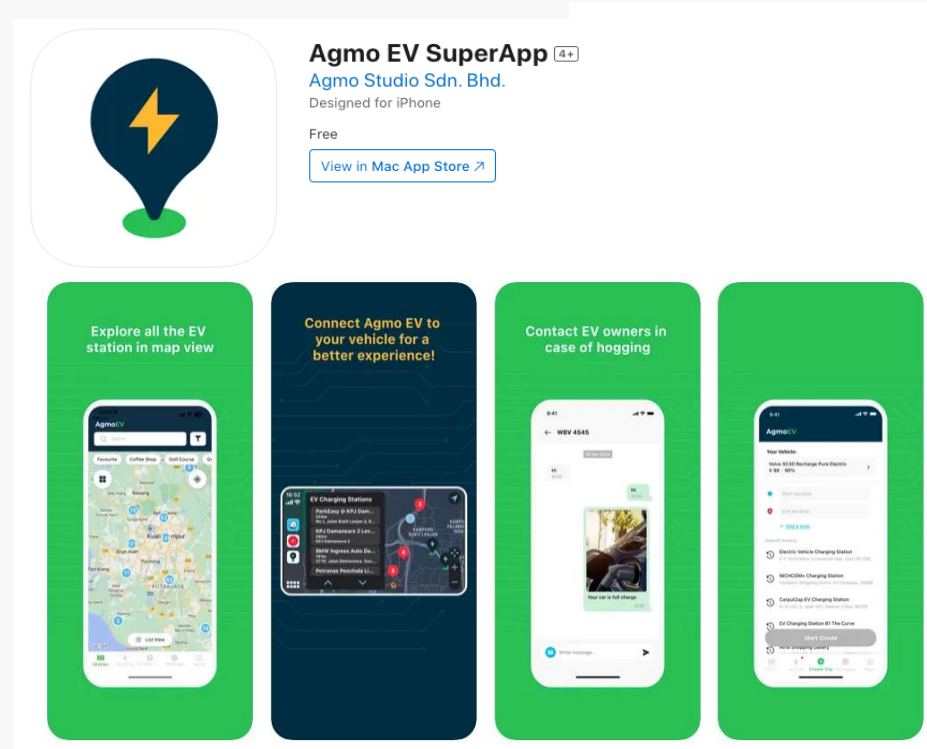


Now,

With Alibaba EMAS SuperApp:

1. *Consolidate multiple services & features into a single app*
2. *Offers convenience & efficiency*

One-stop platform for various everyday tasks & services.





Search:
Agmo EV SuperApp

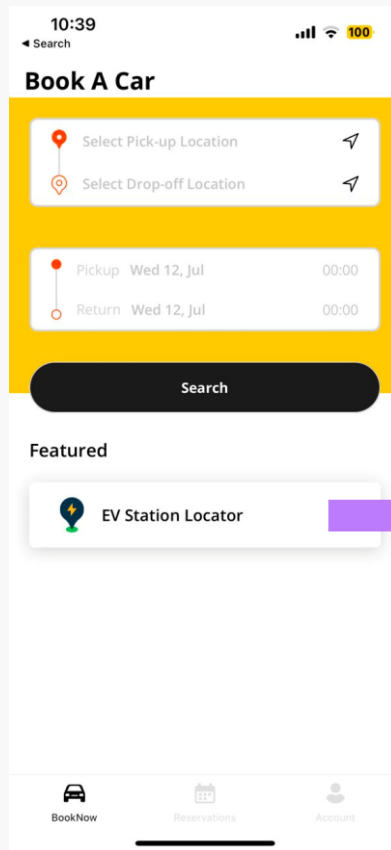


Download now and
experience!



And also,

App can also exist as a mini program in other app.



03



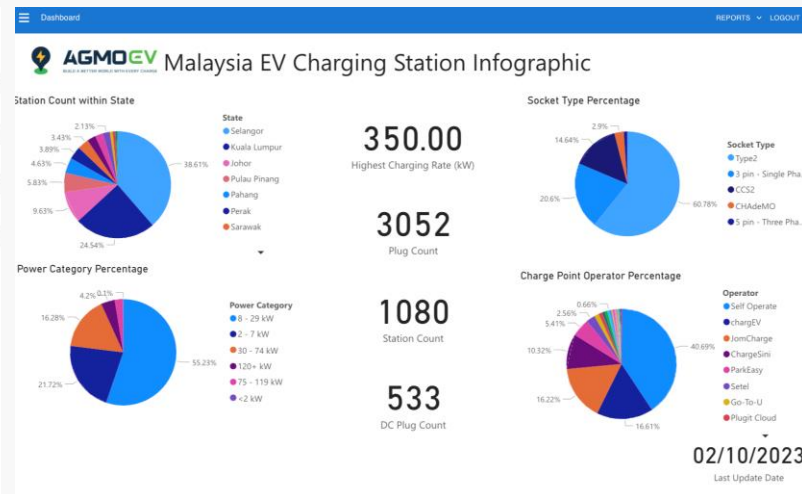
Lead the AI era with the
Microsoft Cloud

Microsoft Power BI & Azure AI Introduction

Before, *Plain Boring Excel*

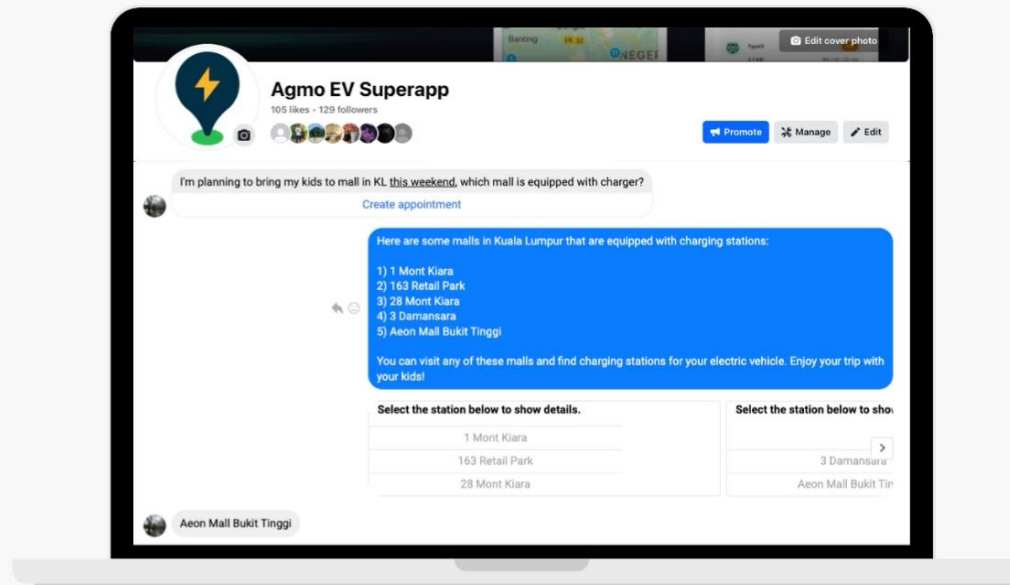
F1																	
fx power																	
	A	B	C	D	E	F	G	H	I	J	K	L	M	N	O	P	Q
1	Station Name	latitude	longitude	Plug Share Id	cost	power	CPO name	description									
2	(AC Charger) Rhadium & Raytech Seremban, Negeri Sembilan	2.704635	101.940201	478656	RM 0.40 / mi	22	ChargeSini	ChargeSini Network Operator(2) 22KW AC Type2 (Please go to apps press I'm here for active the packing lock)Apps Download Link : htt									
3	(AC Charger) Rhadium & Raytech Seremban, Negeri Sembilan	2.704635	101.940201	478656	RM 0.40 / mi	22	ChargeSini	ChargeSini Network Operator(2) 22KW AC Type2 (Please go to apps press I'm here for active the packing lock)Apps Download Link : htt									
4	(AC Charger) Amerin Mall, Seri Kembangan	3.024839	101.751541	469572	RM 0.40 / mi	22	ChargeSini	ChargeSini Network Operator(3) 22KW AC Type2 (Please go to apps press I'm here for active the packing lock)Idfe fees charge schedu									
5	(AC Charger) Amerin Mall, Seri Kembangan	3.024839	101.751541	469572	RM 0.40 / mi	22	ChargeSini	ChargeSini Network Operator(3) 22KW AC Type2 (Please go to apps press I'm here for active the packing lock)Idfe fees charge schedu									
6	(AC Charger) Amerin Mall, Seri Kembangan	3.024839	101.751541	469572	RM 0.40 / mi	22	ChargeSini	ChargeSini Network Operator(3) 22KW AC Type2 (Please go to apps press I'm here for active the packing lock)Idfe fees charge schedu									
7	(AC Charger) BLH ECOENERGY, KUANTAN	3.841507	103.336868	495362	RM 0.40 / mi	22	ChargeSini	ChargeSini Network Operator(2) 22KW AC Type2 (Please go to apps press I'm here for active the packing lock)Idfe fees charge schedu									
8	(AC Charger) BLH ECOENERGY, KUANTAN	3.841507	103.336868	495362	RM 0.40 / mi	22	ChargeSini	ChargeSini Network Operator(2) 22KW AC Type2 (Please go to apps press I'm here for active the packing lock)Idfe fees charge schedu									
9	(AC Charger) OE Resort, Negeri Sembilan	2.815522	101.912743	483078	NULL	NULL	ChargeSini	ChargeSini Network Operator(2) 22KW AC Type2 (Please go to apps press I'm here for active the packing lock)Idfe fees charge schedu									
10	(AC Charger) OE Resort, Negeri Sembilan	2.815522	101.912743	483078	RM 0.40 / mi	22	ChargeSini	ChargeSini Network Operator(2) 22KW AC Type2 (Please go to apps press I'm here for active the packing lock)Idfe fees charge schedu									
11	(AC Charger) OE Resort, Negeri Sembilan	2.815522	101.912743	483078	RM 0.40 / mi	22	ChargeSini	ChargeSini Network Operator(2) 22KW AC Type2 (Please go to apps press I'm here for active the packing lock)Idfe fees charge schedu									
12	(AC Charger) Oriental Melaka Straits Medical Centre, Melaka	2.207943	102.213966	478657	RM 0.40 / mi	22	ChargeSini	ChargeSini Network Operator(5) 11KW AC Type2 (Please go to apps press I'm here for active the packing lock)Apps Download Link : htt									
13	(AC Charger) Oriental Melaka Straits Medical Centre, Melaka	2.207943	102.213966	478657	RM 0.40 / mi	22	ChargeSini	ChargeSini Network Operator(5) 11KW AC Type2 (Please go to apps press I'm here for active the packing lock)Apps Download Link : htt									
14	(AC Charger) Oriental Melaka Straits Medical Centre, Melaka	2.207943	102.213966	478657	RM 0.40 / mi	22	ChargeSini	ChargeSini Network Operator(5) 11KW AC Type2 (Please go to apps press I'm here for active the packing lock)Apps Download Link : htt									
15	(AC Charger) Oriental Melaka Straits Medical Centre, Melaka	2.207943	102.213966	478657	RM 0.40 / mi	22	ChargeSini	ChargeSini Network Operator(5) 11KW AC Type2 (Please go to apps press I'm here for active the packing lock)Apps Download Link : htt									
16	(AC Charger) Oriental Melaka Straits Medical Centre, Melaka	2.207943	102.213966	478657	RM 0.40 / mi	22	ChargeSini	ChargeSini Network Operator(5) 11KW AC Type2 (Please go to apps press I'm here for active the packing lock)Apps Download Link : htt									
17	(AC Charger) Raytech Bangi	2.961205	101.752068	456245	RM 0.40 / mi	22	ChargeSini	Website : Chargesini.comProduct Enquiry : Sangitech.my Email : support@chargesini.comCustomer Service Support : wa.me/601116									
18	(AC Charger) Raytech Bangi	2.961205	101.752068	456245	RM 0.40 / mi	22	ChargeSini	Website : Chargesini.comProduct Enquiry : Sangitech.my Email : support@chargesini.comCustomer Service Support : wa.me/601116									
19	(AC Charger) Raytech Maluri, Kuala Lumpur	3.128197	101.720963	471728	RM 0.40 / mi	22	ChargeSini	ChargeSini Network Operator(1) 22KW AC Type2 (Please go to apps press I'm here for active the packing lock)Apps Download Link : htt									
20	(AC Charger) Raytech Puchong, Selangor	3.04223	101.618088	474973	RM 0.40 / mi	22	ChargeSini	ChargeSini Network Operator(1) 22KW AC Type2 (Please go to apps press I'm here for active the packing lock)Bring Your Own Type 2 C									
21	(AC Charger) Raytech Sekamari, Kajang	3.019086	101.776482	474974	RM 0.40 / mi	22	ChargeSini	ChargeSini Network Operator(2) 22KW AC Type2 (Please go to apps press I'm here for active the packing lock)Apps Download Link : htt									
22	(AC Charger) Raytech Sekamari, Kajang	3.019086	101.776482	474974	RM 0.40 / mi	22	ChargeSini	ChargeSini Network Operator(2) 22KW AC Type2 (Please go to apps press I'm here for active the packing lock)Apps Download Link : htt									
23	(AC Charger) SMILE HOTEL SHAH ALAM, Shah Alam	3.085349	101.522308	483348	RM 0.40 / mi	22	ChargeSini	ChargeSini Charging Network2 x 11KW AC T2 sockets (Please go to apps & press "I'm here" to release the packing lock)Idfe fees charge									
24	(AC Charger) SMILE HOTEL SHAH ALAM, Shah Alam	3.085349	101.522308	483348	RM 0.40 / mi	22	ChargeSini	ChargeSini Charging Network2 x 11KW AC T2 sockets (Please go to apps & press "I'm here" to release the packing lock)Idfe fees charge									
25	(AC Charger) TERMINAL 1 - Domestic and International Cuisines, Genting Hig	3.438709	101.69323	470421	RM 0.20 / mi	11	ChargeSini	ChargeSini Network Operator2 x 11 KW AC Type2 sockets(Please go to apps press I'm here to unlock the packing bay lock)Apps Downlo									
26	(AC Charger) TERMINAL 1 - Domestic and International Cuisines, Genting Hig	3.438709	101.69323	470421	RM 0.20 / mi	11	ChargeSini	ChargeSini Network Operator2 x 11 KW AC Type2 sockets(Please go to apps press I'm here to unlock the packing bay lock)Apps Downlo									
27	(COMING SOON) ECO ARDENCE	3.095158955	101.4817338	521087	RM 0.80 / kW	22	chargeEV	chargeEV charging hub2 x StarCharge Jupiter 60 DCFC Dual CCS2 (60kW/200A/63kVA) - 2 x 60 kW DC CCS2 (1 CCS2/stall plugged in)- 4									
28	(COMING SOON) ECO ARDENCE	3.095158955	101.4817338	521087	Free	22	chargeEV	chargeEV charging hub2 x StarCharge Jupiter 60 DCFC Dual CCS2 (60kW/200A/63kVA) - 2 x 60 kW DC CCS2 (1 CCS2/stall plugged in)- 4									
29	(COMING SOON) ECO ARDENCE	3.095158955	101.4817338	521087	Free	60	chargeEV	chargeEV charging hub2 x StarCharge Jupiter 60 DCFC Dual CCS2 (60kW/200A/63kVA) - 2 x 60 kW DC CCS2 (1 CCS2/stall plugged in)- 4									
30	(COMING SOON) ECO ARDENCE	3.095158955	101.4817338	521087	RM 1.20 / kW	60	chargeEV	chargeEV charging hub2 x StarCharge Jupiter 60 DCFC Dual CCS2 (60kW/200A/63kVA) - 2 x 60 kW DC CCS2 (1 CCS2/stall plugged in)- 4									
31	(COMING SOON) ECO ARDENCE	3.095158955	101.4817338	521087	Free	22	chargeEV	chargeEV charging hub2 x StarCharge Jupiter 60 DCFC Dual CCS2 (60kW/200A/63kVA) - 2 x 60 kW DC CCS2 (1 CCS2/stall plugged in)- 4									
32	(COMING SOON) ECO ARDENCE	3.095158955	101.4817338	521087	Free	22	chargeEV	chargeEV charging hub2 x StarCharge Jupiter 60 DCFC Dual CCS2 (60kW/200A/63kVA) - 2 x 60 kW DC CCS2 (1 CCS2/stall plugged in)- 4									
33	(COMING SOON) ECO ARDENCE	3.095158955	101.4817338	521087	Free	60	chargeEV	chargeEV charging hub2 x StarCharge Jupiter 60 DCFC Dual CCS2 (60kW/200A/63kVA) - 2 x 60 kW DC CCS2 (1 CCS2/stall plugged in)- 4									
34	(COMING SOON) ECO ARDENCE	3.095158955	101.4817338	521087	RM 0.80 / kW	22	chargeEV	chargeEV charging hub2 x StarCharge Jupiter 60 DCFC Dual CCS2 (60kW/200A/63kVA) - 2 x 60 kW DC CCS2 (1 CCS2/stall plugged in)- 4									
35	(COMING SOON) ECO ARDENCE	3.095158955	101.4817338	521087	RM 0.80 / kW	22	chargeEV	chargeEV charging hub2 x StarCharge Jupiter 60 DCFC Dual CCS2 (60kW/200A/63kVA) - 2 x 60 kW DC CCS2 (1 CCS2/stall plugged in)- 4									
36	(COMING SOON) ECO ARDENCE	3.095158955	101.4817338	521087	RM 1.20 / kW	60	chargeEV	chargeEV charging hub2 x StarCharge Jupiter 60 DCFC Dual CCS2 (60kW/200A/63kVA) - 2 x 60 kW DC CCS2 (1 CCS2/stall plugged in)- 4									
37	1 Sentul Condominium	3.200006	101.689575	521074	RM 0.40 / mi	22	ChargeSini	ChargeSini Network Operator(2) 22KW AC Type2 (Please go to apps press I'm here for active the packing lock)Idfe fees charge schedu									
38	1 Sentul Condominium	3.200006	101.689575	521074	RM 0.40 / mi	22	ChargeSini	ChargeSini Network Operator(2) 22KW AC Type2 (Please go to apps press I'm here for active the packing lock)Idfe fees charge schedu									
39	28 Mont Kiara	3.173298	101.653021	292003	RM 1.00 / mi	7	JonCharge										
40	28 Mont Kiara	3.173298	101.653021	292003	RM 1.50 / mi	11	JonCharge										
41	3 Damansara	3.130474898	101.6269304	108618	RM 1.50 / 10	3.7	chargeEV	chargeEV network2 x 3.7 KW AC T2 cabledParking charges applyBasement 1-817 40 / 1-C17 3									

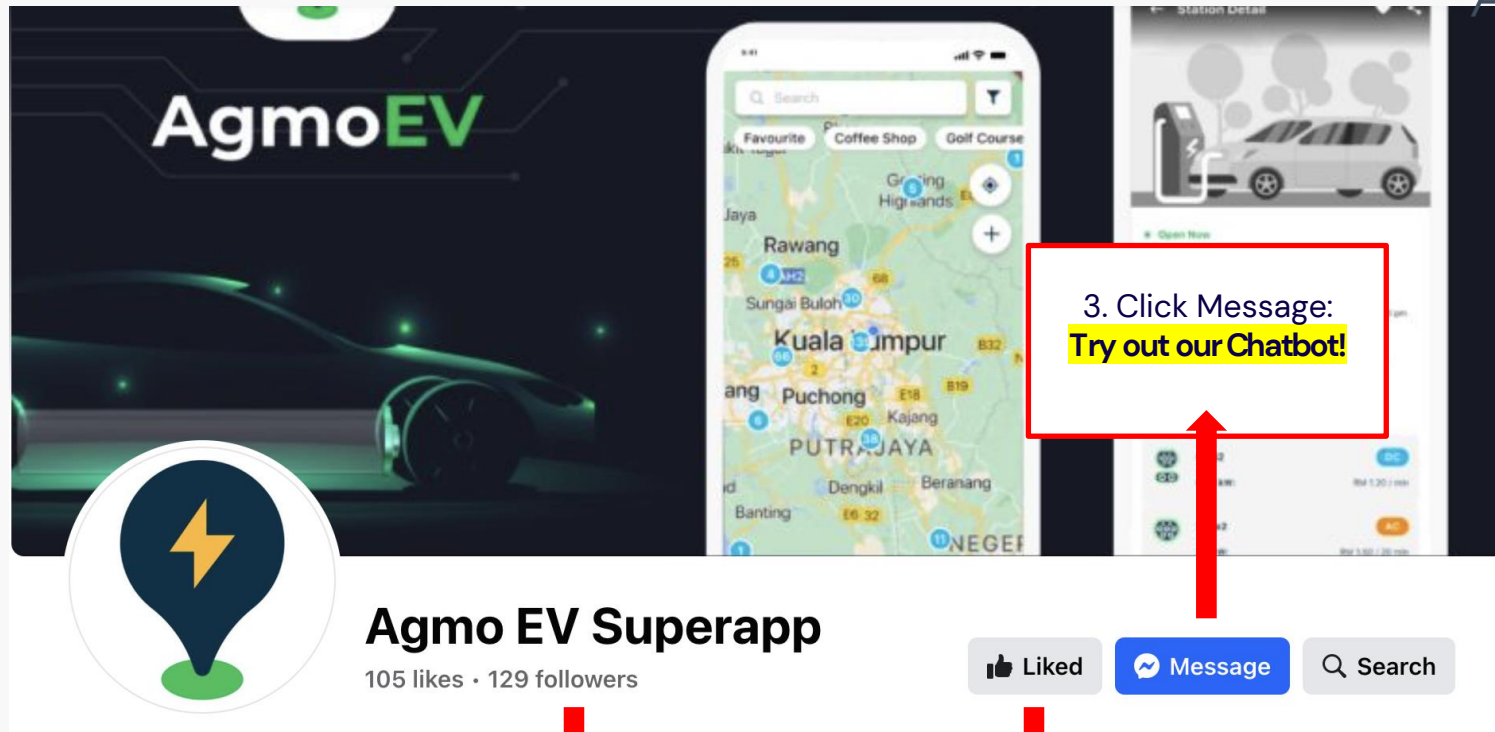
After, *Visualize with dashboard*



Azure ChatGPT

Agmo EV SuperApp Facebook page using Azure ChatGPT as chatbot to interact with users.





3. Click Message:
Try out our Chatbot!

1. Facebook search:
Agmo EV Superapp

2. Like/ Follow:
Agmo EV Superapp

04



The #1 Low-Code Platform

iOS App Development Journey



2011



2014



2017

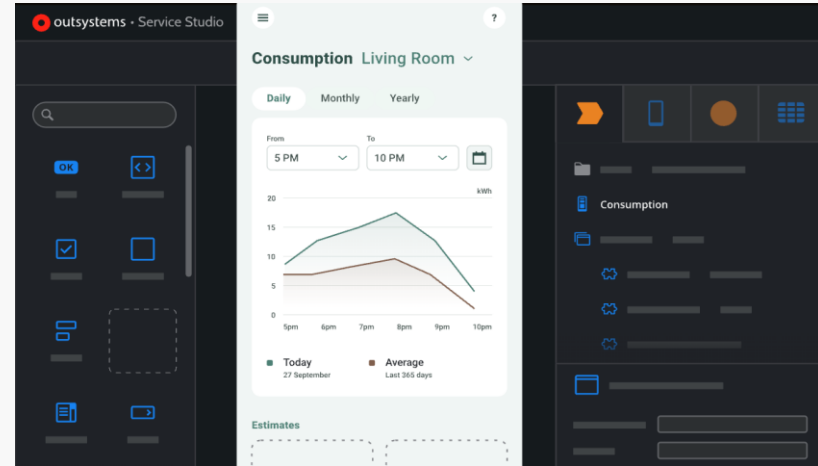


2021

*Low-code development platform
that enable organizations to rapidly*



&



Web and mobile applications with
minimal hand-coding and manual programming.

Key features & aspects of OutSystems include:

- Visual Development
- Low-Code
- Integration
- Deployment
- Scalability
- Security
- Monitoring & Analytics
- Collaboration



05



AWS Generative AI Introduction

What is Generative AI?

1. Creates new content & ideas, including **conversations, stories, images, videos & music**
2. Powered by large models that are pretrained on vast corpuses of data & commonly referred to as Foundation Models

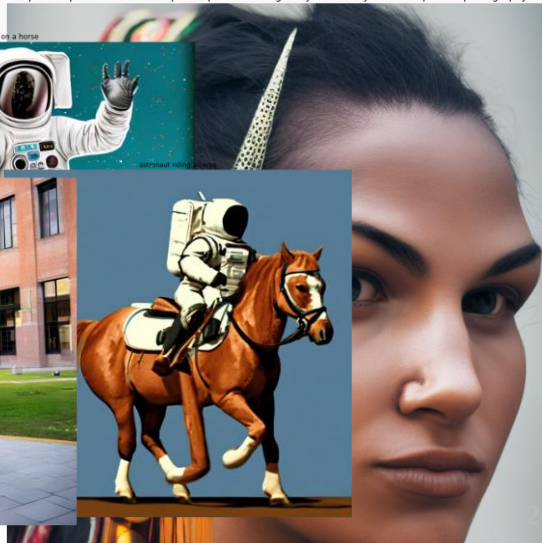
A golden retriever wearing glasses and a hat in a portrait painting



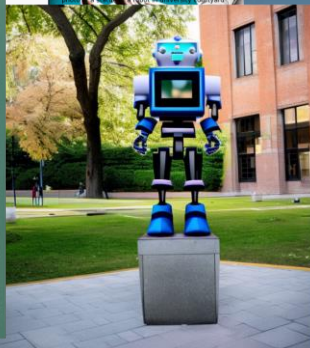
kids cartoon charater portrait,



portrait photo, tribal make up, side profile, looking away, serious eyes, 50mm portrait photography



astronaut on a horse



Common Use Cases



Text
generation



Q&A



Text
summarization



Text
extraction



Paraphrase
rephrase



Search



Code
generation



Image
generation



Image
classification



Audio
generation



Video
generation

Let's explore what
the future of Kuala Lumpur
looks like *when using Generative AI?*

Triple Towers *with High Tech Rail*

- Generated by Generative AI



***Space Ship** as Public Transport*

- Generated by Generative AI

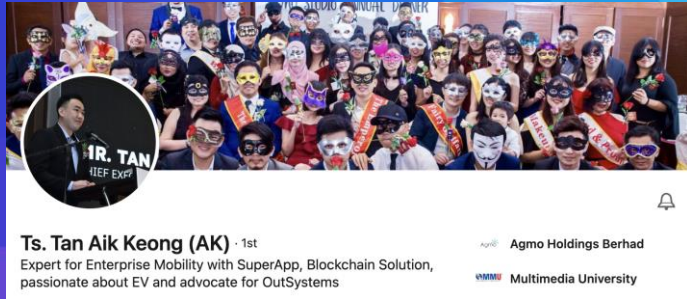


Agmo is **HIRING!**

- Project Manager/ Business Analysts
- Frontend Web Developers
- Mobile Apps Developers
- Backend Developers
- Data Scientist
- Quality Assurance
- Technical Support
- UI/ UX Designer
- Business Development

Apply at hr@agmogroup.com

Let's connect!



LinkedIn:
Ts. Tan Aik Keong (AK)

Apply job at:
hr@agmogroup.com





Quiz time!

The winner will be determined
based on the
highest score achieved
within the **shortest time frame**



Game Code **876333**

Join via QR code

1. Use any device to open

joinmyquiz.com/pro

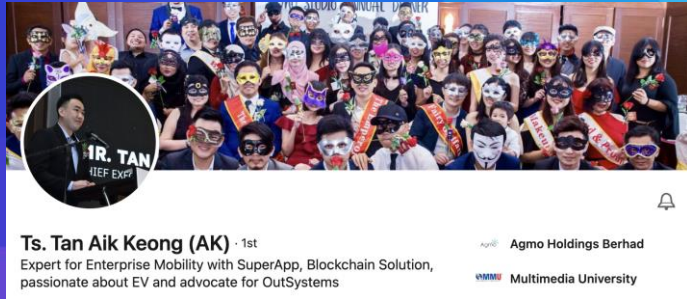


2. Enter join code

876333



Let's connect!



LinkedIn:
Ts. Tan Aik Keong (AK)

Apply job at:
hr@agmogroup.com

